

Type:	Wall-mounted fiber optic box	
Ref:	BU-XN-x, see ordering information	REV: 1.4
Date:	01.02.2019	DP
Modification:	02.04.2021	DP

FTTH Solutions

Fibrain wall-mounted fiber optic box BU-XN



DESCRIPTION:

- Housing material PC+ABS – ensures high mechanical resistance
- Light and compact design
- Optional splice holders for 6 splices
- Optional panel for 5 adapters
- Possibility of mounting 3 Alubox 55x7x4mm PLC splitters in splice holder
- Dedicated mounting points for inline and drop cable
- Possibility of installation up to 8 drop cables
- Maximum 2 splice holders per box

TECHNICAL SPECIFICATION:





Technical data	BU-XN
Maximum splices number	12
Maximum adapters number	5
FO adapter type (flangeless only)	SC, LC
Maximum cable diameter	
-inline cable port	Ø15mm
-drop cable port	Ø5mm
Dimensions (W)x(H)x(D) [mm]	72x160x29
Temperature range	-20°C do +50°C
Housing material	PC + ABS
Splice holder material	PP
Adapter panel material	PC + ABS
Ingress protection	IP44

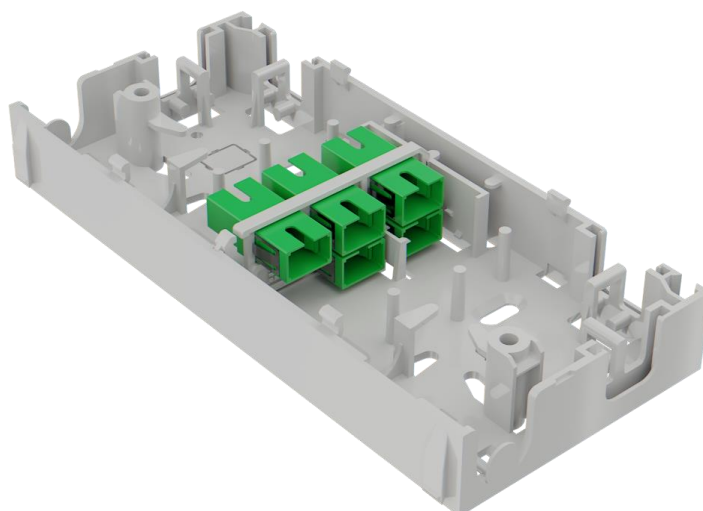


Type:	Wall-mounted fiber optic box	
Ref:	BU-XN-x, see ordering information	REV: 1.4
Date:	01.02.2019	DP
Modification:	02.04.2021	DP

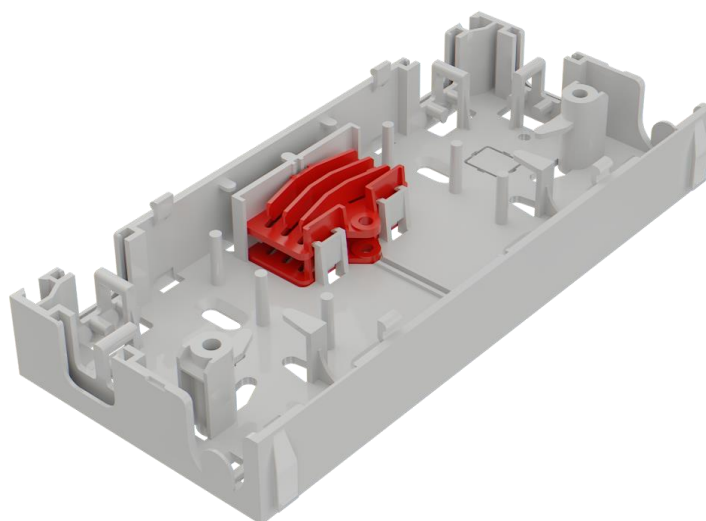
FTTH Solutions

ADDITIONAL EQUIPMENT:

	Adapters (flangeless type)	AXXX-xx
	Adapter panel (for 5 adapters)	BU-XN-AP
	Splice protection sleeves	FB7442
	Splice holder (for 6 splices)	BU-XN-SH



View of housing equipped in adapter panel and SCA adapters.



View of housing equipped in two splice holders.

Type:	Wall-mounted fiber optic box	
Ref:	BU-XN-x, see ordering information	REV: 1.4
Date:	01.02.2019	DP
Modification:	02.04.2021	DP

FTTH Solutions

ORDERING INFORMATION:

BU-XN-ABCD-EFF-GG

Ordering syntax:

A – Adapter panel:

0 – none
1 – equipped

B – Number of FO adapter:

0 – 5

C – Adapter class:

0 – none
1 – Standard One-Piece
2 – Premium One-Piece with internal shutter

D – Type of FO adapter (flangeless):

0 – none
1 – SC/PC
2 – SC/APC
3 – LC/PC
4 – LC/APC

E – Number of splice holder:

0 – 2

FF – Number of protection sleeve:

0 – 12

GG – Housing colour:

WH – white

Note: box can not be equipped in adapter panel and splice holder simultaneously.

Example:

BU-XN-1512-000-WH

Fibrain BU-XN wall mounted fiber optic box equipped in adapter panel, 5x SCA Standard adapter, white housing.

This document and the statements contained in it, are not intended for customers within the meaning of Civil Code. The information submitted in this document is to our knowledge and belief true at the time of issue, however, we do not assume any liability whatsoever for its accuracy, and completeness. This document is for informational purposes on an "as is" basis only, and Fibrain reserves the right to change its contents at any time without prior notice. The specification cannot in any case be considered an offer within the meaning of the Civil Code and is not contractually valid unless specifically authorized by Fibrain. Before using this product, its buyer and/or user has to make sure that it is suitable for the intended use. All liability issues related to this product are subjected to the seller's separate Terms of Sale or the terms and conditions agreed with the Fibrain representative or distributor.